

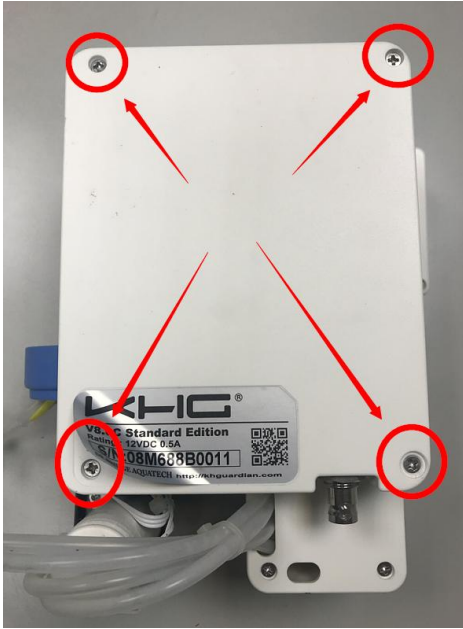
How to repair SD (SD_ERR) 或記錄無法存取的修復方式

1. Remember to disconnect the KHG first 切記先將 KHG 斷開電源。
2. Using a screwdriver, remove the four screws at the red circle marking (Figure 1).使用螺絲起子，拆除紅圈標示處的四顆螺絲(圖一)。
3. Open the back cover to see where the SD card is (Figure 2), as indicated by the red circle. 打開背蓋，即可看見 SD 卡所在位置(圖二)，如紅圈標示處。
4. Following the direction of the arrow (Figure 3), push the SD card gently inwards and then release it, and the SD card will automatically eject outward. 依據箭頭指示方向(圖三)，先將 SD 卡輕輕向內推到底然後放開，SD 卡即會朝外自動彈出。
5. Using an eraser, gently rub the SD card's gold finger (Figure 4) to clean it. 使用橡皮擦，輕輕塗擦 SD 卡的金手指(圖四)，使它清潔。
6. Then push the SD card gently inwards and release it, and SD will lock automatically. 然後再將 SD 卡輕輕向內推到底然後放開，此時 SD 便會自動鎖住。
7. Power on the KHG again.重新將 KHG 上電。
8. If the error is resolved, it means poor contact. Please try to avoid moisture corrosion afterwards. At this time, close the back cover and lock the four screws back. 如果錯誤解除，即代表接觸不良，此後請注意設法避免濕氣鏽蝕問題。這時將背蓋蓋回，鎖回四顆螺絲即可。
9. If the SD ERR problem persists, remember to disconnect the KHG first. 如果 SD ERR 問題依然存在，切記先將 KHG 斷開電源。
10. Please take out the SD card, reformat it, or replace it with new one (note that the SD card capacity should not exceed 16GB). 請將 SD 卡取出重新格式化、或更換新品 (注意，SD 卡容量不要大於 16GB)。
11. When the SD is reformatted, the file system must select "FAT32" (Figure 5). SD 重新格式化時，檔案系統必須選擇 "FAT32" (圖五)。
12. Please download the curve kernel online at following URL .請上網下載曲線內核，網址為 <http://www.khguardian.com/FW/CHART.zip>
13. After downloading, please unzip CHART.zip and you will be able to retrieve the CHART.DAT file. 下載後，請將 CHART.zip 解壓縮，即可取出 CHART.DAT 這個檔案。
14. Please copy the CHART.DAT file to the SD card. 請將 CHART.DAT 這個檔案複製到 SD 卡上。
15. After reinstalling the SD card, power on the KHG. 重新裝回 SD 卡後，將 KHG 上電。
16. If the error is removed, then back cover and lock back the four screws. 如果

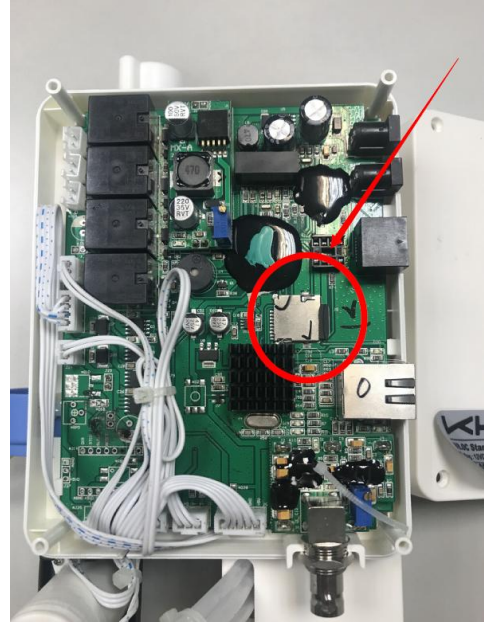
錯誤解除，這時將背蓋蓋回，鎖回四顆螺絲即可。

17. If the error persists, contact your dealer and return the machine to factory inspection. 如果錯誤依然無法解除，請聯繫您的經銷商，將機器轉回工廠檢修。

(Figure 1 圖一)



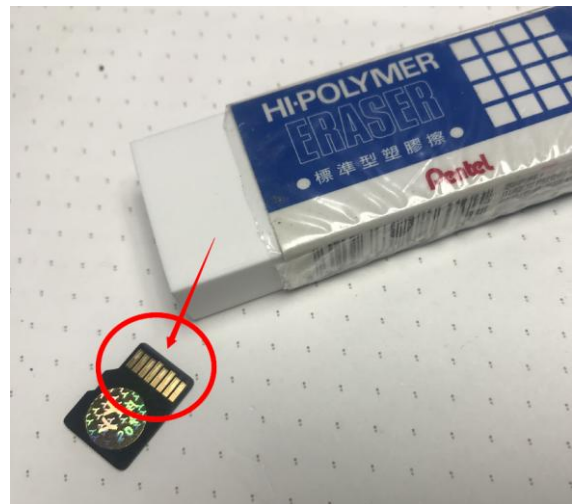
(Figure 2 圖二)



(Figure 3 圖三)



(Figure 4 圖四)



(Figure 5 圖五)

